



Corporate Presentation

- Hitech Industrial Solutions (Pvt) Ltd (HIS) with its high ambitions is a rapidly growing company in the Railways and Energy sectors of Pakistan. The dedicated and experienced Management Team of HIS has secured a special place in history as the pioneer and leader in bringing state of the art technology to Pakistan Railways since decades. The main business focus consists of Track Equipment and Solutions, Rolling Stock, Railway Signaling Solutions and Services for Signaling and Track Works (both for Mainline and Metros). In Energy sector we are looking for the right partners with a long-term commitment.
- HIS team comprises of competent and motivated individuals, including highly qualified professionals in the fields of Railway Systems, Energy Systems, business development and services.
- Management of HIS has earned the reputation of a strong and reliable business partner providing leading edge technology and innovative rail solutions based on high quality products and services backed by comprehensive support functions.

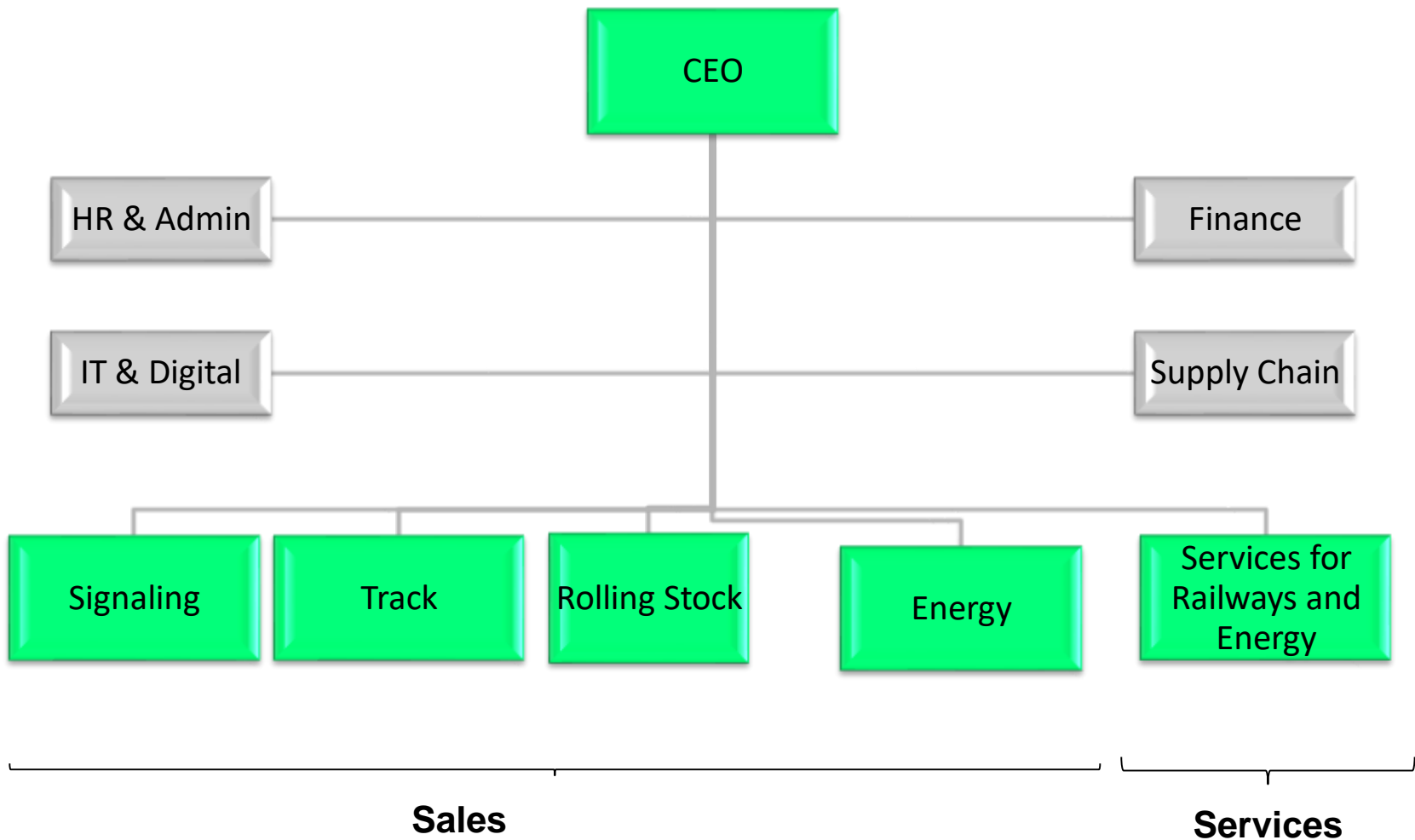
- Management Team of HIS are highly qualified and experienced techno-commercial business leaders who have worked abroad and locally in multinational and national conglomerates at top positions. In those positions they have been instrumental in securing and delivering the largest orders in the history of Pakistan Railways in the areas of signaling and track while partnering with leading European and Chinese multinationals.
- On the Energy side they have worked with Alstom, ABB, Huawei, etc to implement their respective solutions on different projects of national importance.
- Now they bring all of that expertise and experience to Hitech Industrial Solutions with a renewed passion and fervor to scale even greater heights.
- Leading global players have eagerly selected HIS to partner with them in Pakistan. These renowned companies include EMAS, MZA, AFEC and Gurmak Demiryolu from Turkiye, GWQC, Shanghai Wedo from China, CTF France, amongst others.

Presence in Pakistan



- Head Office in DHA Lahore
- Branch Office in Rawalpindi is under planning

Functional Organization Chart





Vision Statement

To be the preferred supplier of state-of-the-art technologies to our customers by providing complete and sustainable power engineering and transportation solutions in the rail and energy sectors.



Mission Statement

By providing state of the art technology solutions to overcome rail mobility and infrastructural challenges, we create superior value for our customers, principals, shareholders and employees.

We lead through outstanding and innovative products and solutions for enhancement of performance, efficiency and safety of our customers.

Through business excellence, motivation and a collaborative culture we endeavor to achieve the highest level of customer and employee satisfaction. We work with passion, integrity, respect for individuals and care for society and the environment.

- Integrity
- Stakeholder Focus
- Business Excellence





Main Business Areas:

- Track Equipment and Solutions
- Rolling Stock Solutions
- Railway Signaling Solutions
- Energy Solutions
- Services for Railways and Energy sectors

Product / Services

Track Equipment and Solutions

- Railway Track is a combination of formation, ballast, sleepers, rails, fastening systems and turnouts. It enables trains to move by providing a dependable surface for their wheels to roll upon. The prime objective of a Railway Track is to enable passengers reach at their destination safely.
- Since Pakistan Railways is our major customer, Hitech firmly believes in offering safer, more reliable and highly valuable solutions. Hitech is serving with the aim of encouraging the optimization of railway operations, especially in relation to railway infrastructure performance and economics.
- Our never ending journey for continuous improvement keeps us motivated to work relentlessly on enhancing the efficiency of operations and maintenance of railway track and associated infrastructure. Hitech provides complete track equipment solutions involving but not limited to supply and installation of rails, turnouts, fasteners and sleepers etc.

Hitech is capable of providing following Track, Equipment & Solutions including:

- Rails
- Turnouts
- Rail and Turnout Fastening Systems
- Sleepers (Wooden and Concrete)
- Arc Welding Machines
- Thermite & Flash Butt Welding Systems
- Track Recording Vehicle (Self & Non Self propelled)
- Rail Drilling, Grinding and Cutting Machines
- Track Maintenance Tools

Product / Services

Rolling Stock Solutions

- The term rolling stock in rail industry refers to any vehicles that moves on a railway track. It usually includes both powered and unpowered vehicles for example locomotives, railroad cars, coaches and wagons.
- Hitech offers one of the most comprehensive rail vehicle portfolios in the world. From mainline to metro, light rail to locomotives, our strategy is one of continuous development that provides the most effective and cost-efficient rail solutions today and in the future.
- With the will of further strengthening our capabilities of providing Robust and Technologically advanced Products and Solutions to our customer. We are working on getting more world renowned Principals in the Rolling stock segment on board with Hitech.

Hitech is capable of providing following Rolling Stock Products and Solutions:

- Diesel Electric Locomotives
- Freight Wagons
- Passenger Coaches
- Spare Parts
- Refurbishment of Locomotives
- Metros

Importance of Railway Signaling for Train Operation

- Railway Signaling is the system by which the movement of trains is controlled and is highly important in terms of safety. Due to heavy mass and velocity, the breaking distance is very long such that the driver can not see the situation at the track. Therefore, they need to have prior warning in the form of signals.
- Trains are guided by the track and hence have to be routed in such a way as to avoid collisions with one another. Therefore, Signaling System is used to direct railway traffic and keep trains clear of each other at all times.
- The railway signaling is governed by a principle called 'Interlocking' which is a system meant for safe working of trains.

Products / Services

Railway Signaling Solutions

- Pakistan Railways has a vast network of track which is still guided by old/obsolete Signaling Systems. Pakistan Railways is in the process of up grading their Signaling Systems in which the Management of Hitech played a vital role. This transformation into a Computer Based Interlocking (CBI) Signaling System will bring technological advancement to Pakistan Railways and enhance safe train operation with significant financial benefits.

Hitech offers a comprehensive portfolio of Rail Systems Solution including:

- Computer Based Interlocking (CBI) Signaling System
- All Relay Interlocking (ARI) Signaling Systems
- Automatic Train Protection (ATP)
- Radio based Rail Control and Signaling Systems (CBTC)
- Train Monitoring System/Solution
- Level Crossing Protection System
- Other Wayside and Indoor Signaling Equipment

Services for Signaling and Track Works

- At Hitech, we have the required expertise and recourses to deliver quality, efficient and competitive rail services. We provide complete installation, testing and commissioning of wayside and indoor signaling equipment; assist in testing procedures, dismantling of old/obsolete equipment and maintenance services for signaling systems.
- Hitech offers customized solutions that can be used to build a new railway infrastructure or overlaid on existing systems.
- The continuity of operation through post-installation / lifetime support, increased performance and cost-effectiveness through more efficient operations is our primary goal.

Services for Signaling and Track Works

Hitech installation services includes but not limiting to the following equipment:

Wayside & Indoor:

- Underground Cable Laying (Power Cable, Signal Cable & Fiber Optic)
- Track Circuits
- Point Machines along with all accessories
- Magnetic Key Lock
- Signals & Signals Posts
- Junction / Joint Boxes
- Power Supply with Backup Facilities
- CBI (Computer Based Interlocking) Equipment placement
- Control Equipment placement
- Axle Counters



Partners of Hitech



AFEC MAKİNA



Shanghai Wedo Steel Industry

HR Vision

To implement high performance culture through engaged and empowered employees,
where employees and business grow together.

Provide them a conducive work and safe environment.



Below are the Principals specific for different projects/products

- Rails – Wedo Steel (China)
- Turnouts – GWQC (China)
- Rail Fastenings - Gurmak (Turkiye)
- PSC Sleeper Manufacturing Plant – AFEC MAKINA (Turkiye)



Management of Hitech was instrumental in securing and achieving the following Award while heading a different company:

- Proud to be awarded **ISO 9001:2015** Certification (2018).
- Achieved a milestone in upgrading the companies registration in Pakistan Engineering Council (**PEC**) to **C2** category. In 2018 it was the only company to enjoy the C2 category in the Signaling domain of Pakistan Railways.
- Installed the first **Locomotive Simulator** in the history of Pakistan Railways, manufactured by CORYS (World renowned in Railway Simulation), specifically designed for new GE Locomotives (2018).
- Secured & Delivered Largest **Railway Turnout Project** on DDP basis (2018) **PKR 400M**.
- For the first time, introduced rail and turnout repair solution by providing **Arc Welding Technology** to Pakistan Railways resulting in immense cost and time savings for PR (2017).
- Secured & Delivered the largest Signaling Project "**Up gradation of Bin Qasim Station**", from Pakistan Railways in local currency (2017) **PKR 550M**
- Helped and coordinated in securing and delivering Three Signaling orders (**Signal-I, Signal-II & Signal-III**) which are the largest orders awarded in the history of Pakistan Railways ever (2009) **USD 186M**

Largest Signaling Project on DDP basis:

- In September 2016 they secured the Largest Signaling Project “**Up gradation of Bin Qasim Station**”, from Pakistan Railways in local currency.
- It was a turnkey and EPC Contract which includes all new signaling works.
- The installation has been completed and the station is in operation.





Old Signaling System replaced with Computer Based Interlocking Signaling System at Bin Qasim Station.

Largest Turnout Project on DDP basis:

- In Feb 2017, Pakistan Railways Freight Transportation Company (PRFTC) floated an international tender on DDP basis for 19 sets of different types of turnouts.
- They secured the contract with its Principal Qinhuangdao City Shanhaiguan Gongwu Equipment Factory (GWQC), largest private turnout manufacturer in China.



Arc Welding Project:

- For the first time, they introduced rail and turnout repair solution by providing Arc Welding Technology to Pakistan Railways.
- This state of the art technology solution results in immense cost and time savings for Pakistan Railways.





Big order of Rail Fastening System W-14 on CIF basis:

- In 2024, RFP of a big project was floated for more than 230,000 Rail Fastening Systems W-14 sleeper sets on CIF basis.
- Hi-Tech secured the contract with its Principal Gurmak Demiryolu, Turkiye, after competitive bidding in March, 2025.
- Successful factory inspections were carried out in June and November 2025. And deliveries completed in January 2026.





Rail Fastening System W-14

Factory Inspection



- The management team has 35 years of extensive and unique experience in the Telecommunications and SCADA (Supervisory Control and data Acquisition) for the power sector; National transmission and Dispatch Company Pvt. Limited NTDC (formerly WAPDA), Pakistan. & Saudi Electric Company (SEC), Tabuk Sector.
- This brings a deep understanding of power network requirements, system integration and technology evolution.
- It also includes executing and overseeing complex projects, ensuring compliance with stringent international standards and delivering reliable communications and SCADA solutions tailored to the unique demands of the energy infrastructure; electrical power plants, 500KV, 220 KV and 132 KV sub-stations.

- The management portfolio also encompasses planning, complete design and engineering of Telecommunications and SCADA system for power utilities; preparing BOQs and engineering drawings, EOs, technical and financial auditing of bids, specifying solutions to remove project bottlenecks during commissioning of equipment; DPLC ETL 600, Power Link, T-390 and SDH MSE5000, FOX 615, RTU 560, Siemens RTU AK1703, to name a few. Carrying out Design and Engineering of 4 nos. Karachi Electric sub-stations, as detailed below in 2024-2025 is recent example.
- Project success depends on active co-ordination and collaboration with all stake holders. This was pinnacle for management to successfully complete following various projects in Pakistan as well as abroad in K.S.A.

- Load dispatch system Upgradation Project (LDS-II) worth 2.7 Billion Pak Rs (around US\$ 30 Million) which includes the following mile stones:-
- Over 600 KM live Line Replacement of Ground Wire with OPGW in NTDC network.
- 150 Nos. of DPLC type T-390 (Alstom)
- 21 Nos. of SDH/PDH type MSE 5000 (Alstom)
- 42 nos. of SOPHO PABXs (Philips)
- Conversion of age-old pilot cable system of SEC, Tabuk Sector, Saudi Arabia with state-of -the art OPGW and ABB FOX 20 Fiber Optic Telecommunications System (6 Nos. 132 KV sub-stations, 2 Nos. Power Plants and 1no. Switching Station all converted to Fiber Optic system in 1995-2000)
- 350 KM Long ABB PLC Link ETI 101 along with tele-protection NSD61 on 500KV Transmission Line Sheikhpura- Ghazi Barotha HPP.
- ETL-600 along with integrated Tele-protection NSD 50 on 300 KM long 500KV Muzaffargarh-Gatti transmission Line. (Year 2007)
- +/- 660 KV HVDC Lahore Converter Station and Associated peripheral stations; 500 KV Sheikhpura and 500 KV New Lahore. Establishment of Super Data Highways between control centers in Islamabad and Jamshoro using SELTA/Huawei SDH Equipment and integration with existing MSE 5000 SDH equipment (Year 2021)
- During year 2018-2022, Telecom works were carried out on following Projects)
- i)500 KV New Lahore Sub-station (DPLC STE-D 100W, TPS-NU, SDH-SAF-N STM-4)
- ii) 1180 MW CCPP Balloki (FOX 615 and DPLC ETL 600)
- iii)1230 MW CCPP Haveli Bahadur Shah (FOX 615 and DPLC ETL 600)
- Complete Design of SCADA and telecommunications System for Karachi Electric (KE) Network in Collaboration with Unison Engineering Services. SDH FOX 615 and Siemens RTU AK 1703 (since 2024 On-going)
- 132 KV PIDC sub-staion
- Upgradation of 132 KV Pipri West sub-stations.
- 132 KV PSRM sub-station
- Upgradation of 132 KV Gharo sub-station
- 220 KV Okara G/s and 220 KV Toba Tek Singh Sub-station were commissioned using ABB DPLC type ETL600 and Tele-protection NSD 600
- WAPDA 90 Project: ZAP 512 and ZAP 522 for 180 nos. of WAPDA sub-stations and power plants in year 1990. Carried out frequency planning of all PLC links as well.

Looking for Partners with a long term vision

- The management therefore looks forward to exploring how its services can contribute to building a strong and mutual beneficial collaboration with our new long term international partners.



SECURITIES AND EXCHANGE COMMISSION OF PAKISTAN
Company Registration Office

CERTIFICATE OF INCORPORATION

[Under section 16 of the Companies Act, 2017 (XIX of 2017)]

Corporate Unique Identification No. 0211855

I hereby certify that **HI-TECH INDUSTRIAL SOLUTIONS (PRIVATE) LIMITED** is this day incorporated under the Companies Act, 2017 (XIX of 2017) and that the company is **limited by shares**.

Given at **Lahore** this **Twenty Seventh** day of **September**, Two
Thousand and Twenty Two



Muhammad Shoaib Khan
Assistant Registrar



https://securities.sesg.gov.pk/Services/ControllerService/thequery_VERIFY_ONLINE_RECORD_CERTIFICATE0211855

Disclaimer: This certificate is generated by a computerized system and is subject to the general public. It is not a legal document and should not be used as evidence in any court of law. It is the responsibility of the user to ensure the accuracy of the information provided. The Commission of Pakistan is not responsible for any loss or damage caused by the use of this certificate.



FEDERAL BOARD OF REVENUE
TAXPAYER REGISTRATION CERTIFICATE

Registration No. 000004
Date of Registration: 27-Sep-2022
Type of Person: Company
Tax No. 0211855
Tax Date: 27-Sep-2022
Name: HI-TECH INDUSTRIAL SOLUTIONS (PRIVATE) LIMITED
Address: 305 Block H, Street No. 10, DHA Phase 5, Faisalabad
Tax Office: DTDO LAHORE
Activity Type: Business

THIS IS A COMPUTER GENERATED CERTIFICATE AND NO SIGNATURE IS REQUIRED.
Possession of this certificate is required for filing of returns and for claiming tax benefits.

This is not a valid receipt of tax or TDS for the purpose of sections 234A and 234B of section 234C of the Income Tax Ordinance 2001.

Date of Print: 27-Sep-2022



MEMBERSHIP CERTIFICATE
MEMBERSHIP NO: 127651-C

Name & address of Member: **The Lahore Chamber of Commerce & Industry**
11 Shara-e-Ahwan-e-Sarati-e-Tijarat, Lahore.

CERTIFIED that **HI-TECH INDUSTRIAL SOLUTIONS (PVT) LTD** is a member of the Chamber of Commerce & Industry.

G.S.T. No. **936884**
N.T.N. No. **936884**
In a number of this **36/08/2024**

THIS CERTIFICATE shall be valid upon the **31 MAR 2026** unless otherwise notified to the NTN / GST Registration authority / Scheduled Bank concerned.

Given on this **22** day of **Feb** 2024
Signature of Secretary General: *[Signature]*
Witnessed by: *[Signature]*
SHAHID NAZKI - 11th President 2023-24



Lahore Head Office:

550 Block H, Steet # 14, DHA Phase-5,

Lahore – 54000, Pakistan

T: +92 42 32171288

E: info@hitechindustrial.pk



THANK YOU